

LUXTENSION

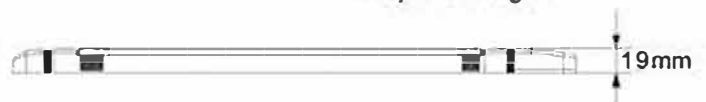
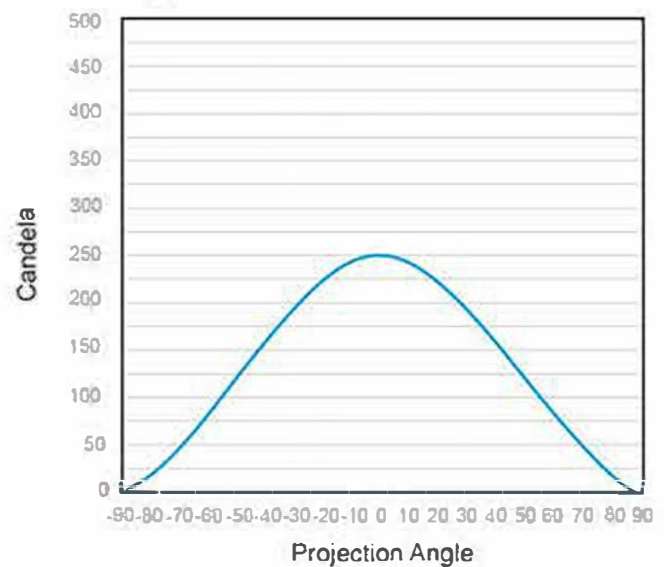


EXTENDABLE LED INTERIOR LAMP



- Personalize the length according to your needs
- Expand and multiply the luminosity adding up several modules and interconnecting up to 6pcs at a time
- Quick & easy installation saving cable connection and labor cost
- Install several modules together with only 1 cable outlet
- Modular design reduces part numbers and lowers the inventory cost

Light distribution of 1 Luxtension

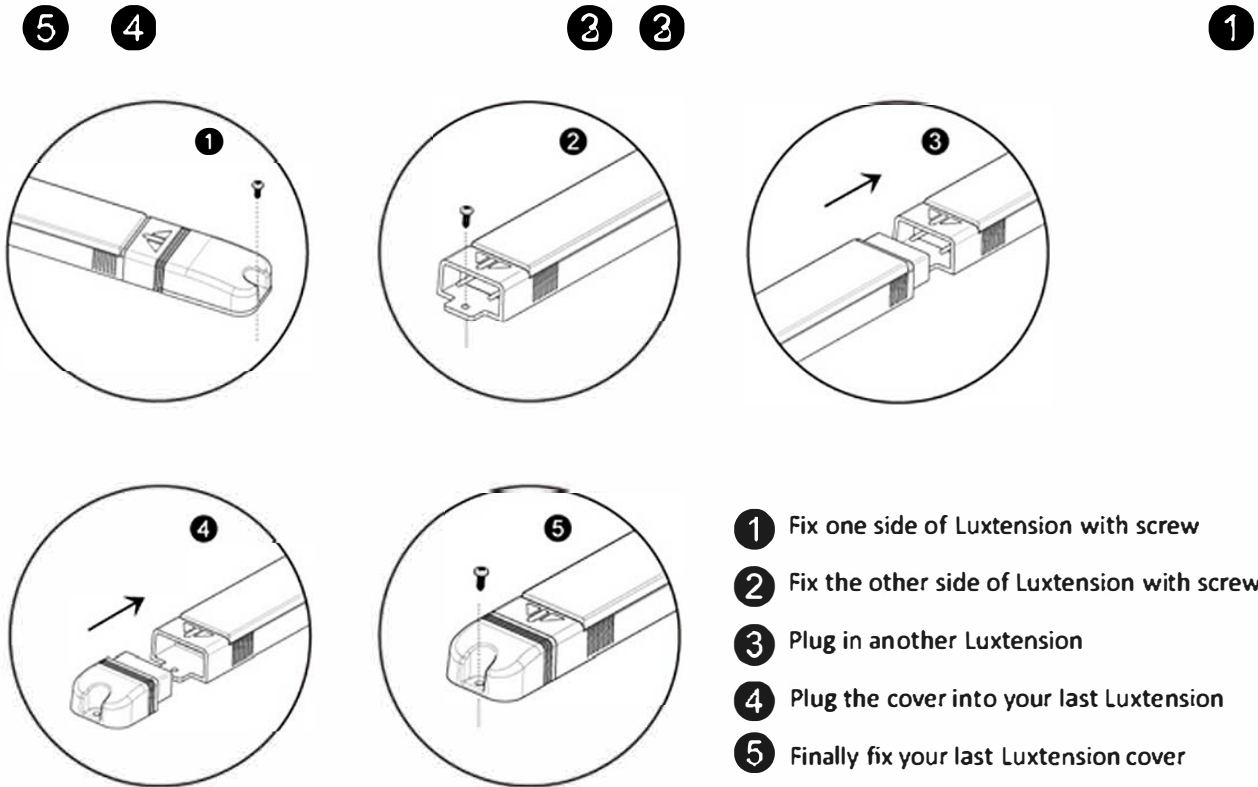


MOUNTING INSTRUCTIONS

FOR LENGTHENING YOUR LUXTENSION

2 Luxtensions: Please follow the steps : 1 → 2 → 3 → 4 → 5

3 Luxtensions: Please follow the steps : 1 → 2 → 3 → 2 → 3 → 4 → 5



- 1 Fix one side of Luxtension with screw
- 2 Fix the other side of Luxtension with screw
- 3 Plug in another Luxtension
- 4 Plug the cover into your last Luxtension
- 5 Finally fix your last Luxtension cover

Luxtension Quantity	Length	72.3488	+	72.3489	SMD LEDs	Watts	Raw Lumen	Effective Lumen	HV CD	Current Draw
1	438.2mm	1		0	18	7	880	730	250	12.8V at 0.530A±0.07 28V at 0.248A±0.04
2	773.6mm	1		1	36	14	1760	1460	500	12.8V at 1.060A±0.14 28V at 0.496A±0.08
3	1109mm	1		2	54	21	2640	2190	750	12.8V at 1.590A±0.21 28V at 0.744A±0.12
4	1444.4mm	1		3	72	28	3520	2920	1000	12.8V at 2.120A±0.28 28V at 0.992A±0.16
5	1779.8mm	1		4	90	35	4400	3650	1250	12.8V at 2.650A±0.35 28V at 1.240A±0.20
6	2115.2mm	1		5	108	42	5280	4380	1500	12.8V at 3.180A±0.42 28V at 1.488A±0.24

Part No.	Voltage	Mounting	Connection	Std pack qty	Resistant				
72.3488	9~32V	surface	130mm fly lead	100	Water	Dust	Shock	Warpage	Temperature
72.3489 (lamp module)					•	•	•	•	-30°C~50°C